

Light efficiency:

117 Lumen/Watt

Light quality:

CRI: 82,7

Color temperature:

3057 K

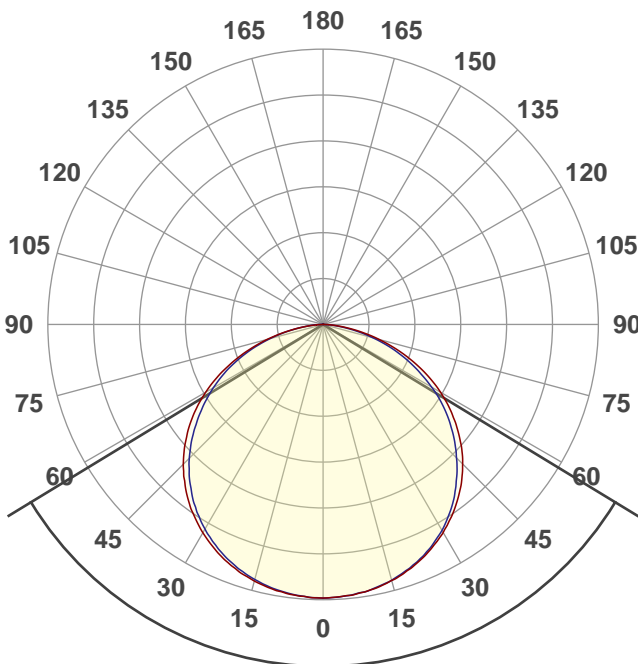
Output: 1444 lm

Peak: 482 cd

Power: 12,4 W

24,0V @ 0,515A

6 PLANES



Beam angle

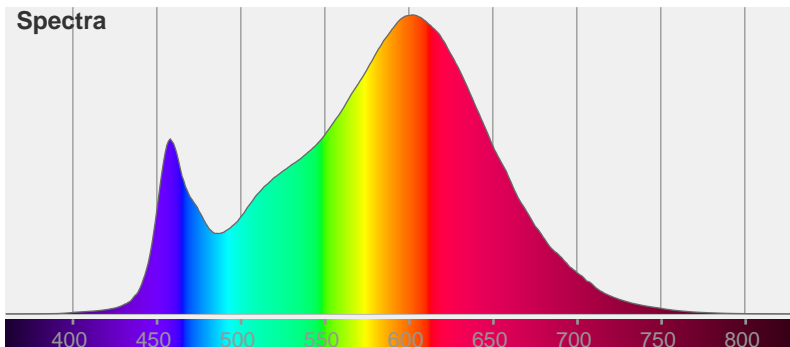
117,4°

Color



CIE1931
x: 0,434
y: 0,404

Spectra



Product name:

027643

SL-ARC-D1500-A45-11.5W 24V

Warm3000

Date and time:

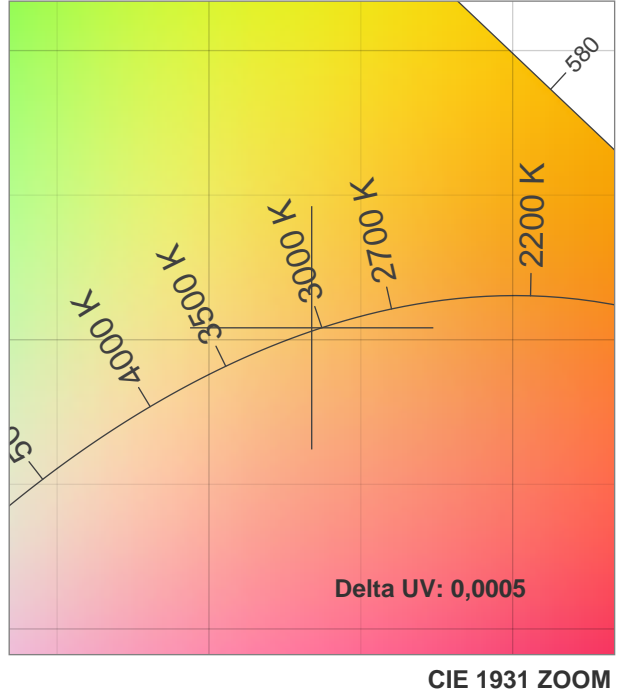
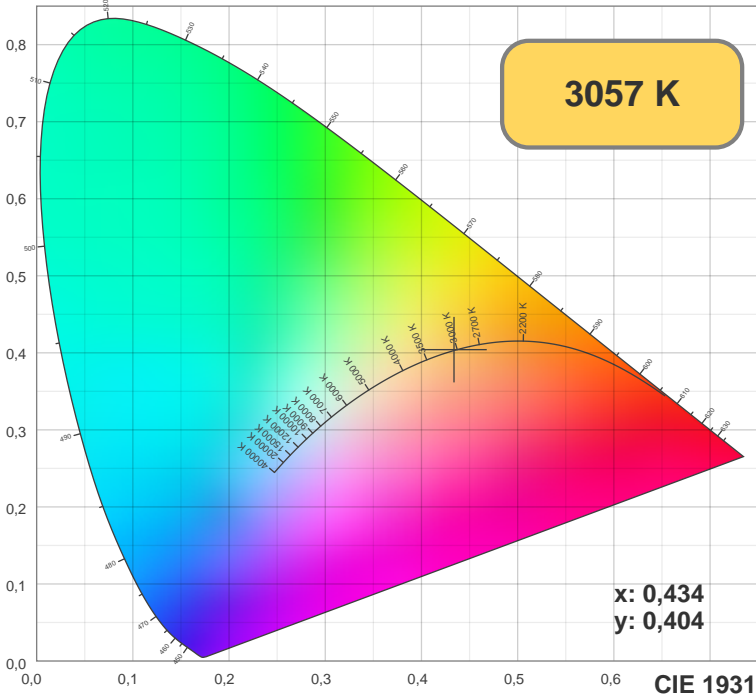
07.05.2020 11:12:27

Item number:

027643

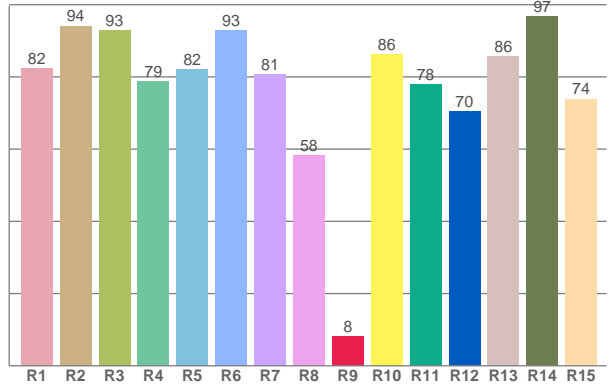
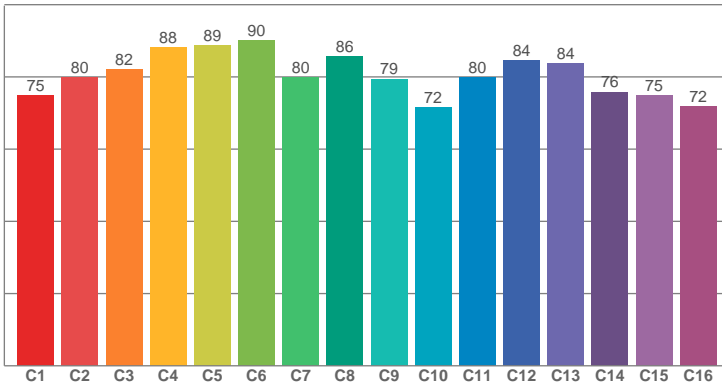
Additional information:

Engineer: Nikolaev Igor



TM30: 80,9

CRI: 82,7 (R1-R8)



CRI R values, only R1-R8 are used to calculate final CRI value

R1	R2	R3	R4	R5	R6	R7	R8	R9	R10	R11	R12	R13	R14	R15
82,29	94,12	92,92	78,68	82,15	92,84	80,59	58,17	8,21	86,13	77,95	70,44	85,61	96,81	73,87

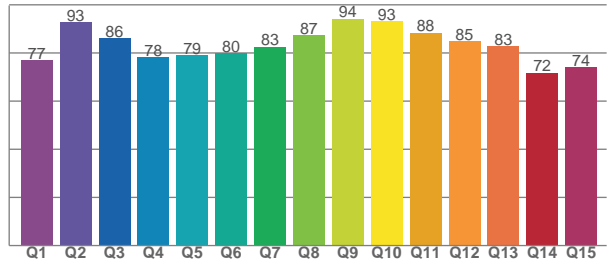
TM30 C values, 16 binned values out of total of 99 C values

C1	C2	C3	C4	C5	C6	C7	C8	C9	C10	C11	C12	C13	C14	C15	C16
74,82	79,91	82,02	88,20	88,70	90,06	79,90	85,60	79,40	71,64	79,88	84,48	83,68	75,82	74,83	71,73

CQS Q values

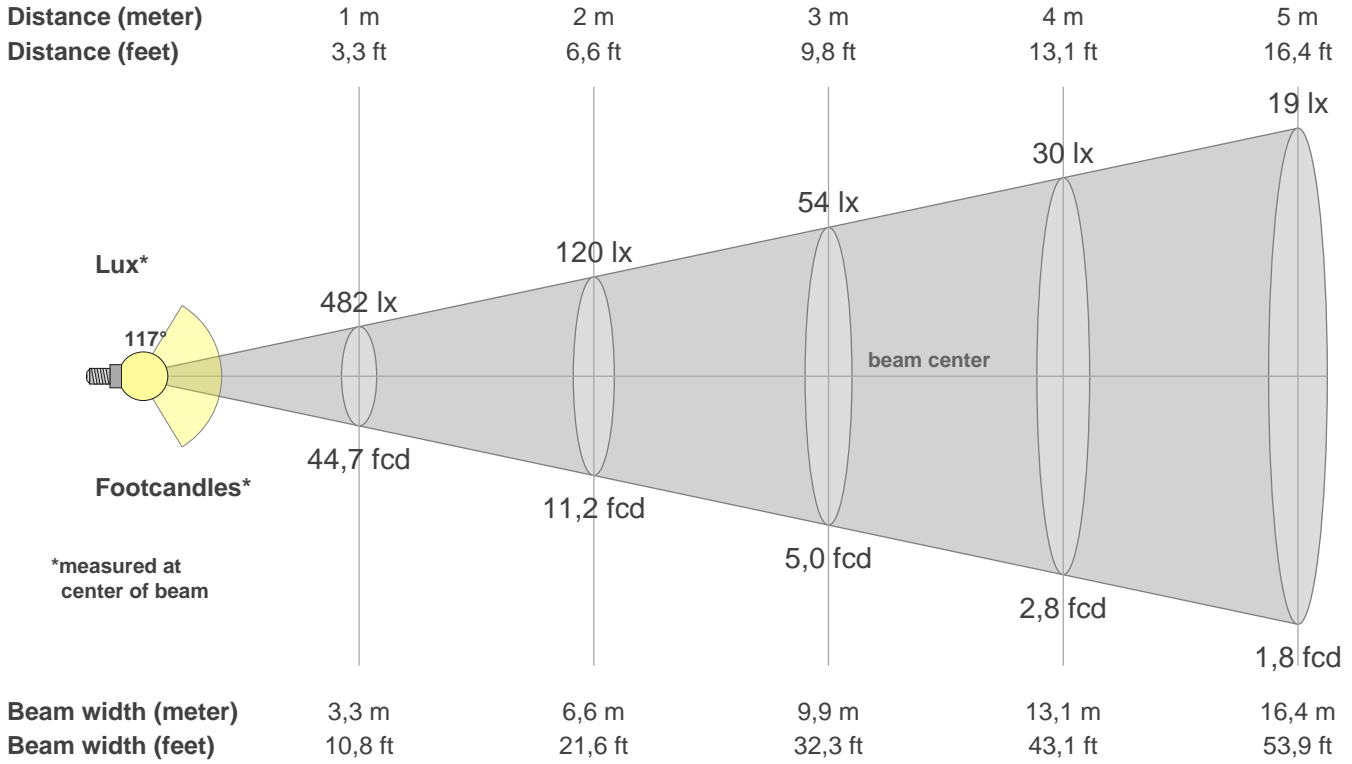
Q1	Q2	Q3	Q4	Q5	Q6	Q7	Q8	Q9	Q10	Q11	Q12	Q13	Q14	Q15
76,95	92,71	86,09	78,26	79,03	79,96	82,65	87,41	94,25	93,15	88,42	84,90	82,87	71,84	74,10

CQS: 82,1



Color parameters

CCT	CRI	CRI R9	TM30 Rf	TM30 Rg	CQS	x	y	u	v	Duv
3057 K	82,7	8,2	80,9	91,6	82,1	0,4	0,4	0,2	0,3	0,0005



Intensities in 0° c-plane

0°	5°	10°	15°	20°	25°	30°	35°	40°	45°	50°	55°	60°	65°	70°	75°	80°	85°	90°	95°
482	479	475	467	456	441	423	401	376	347	314	278	239	195	149	102	59	22	3	0
100%	99%	99%	97%	95%	92%	88%	83%	78%	72%	65%	58%	50%	41%	31%	21%	12%	5%	1%	0%

Intensities in 90° c-plane

0°	5°	10°	15°	20°	25°	30°	35°	40°	45°	50°	55°	60°	65°	70°	75°	80°	85°	90°	95°
482	479	475	466	454	438	419	394	364	332	298	262	221	178	135	91	50	16	0	0
100%	100%	99%	97%	94%	91%	87%	82%	76%	69%	62%	54%	46%	37%	28%	19%	10%	3%	0%	0%

Intensities in 180° c-plane

0°	5°	10°	15°	20°	25°	30°	35°	40°	45°	50°	55°	60°	65°	70°	75°	80°	85°	90°	95°
482	480	476	468	456	442	423	402	377	348	315	279	239	195	149	102	57	20	0	0
100%	100%	99%	97%	95%	92%	88%	83%	78%	72%	65%	58%	50%	40%	31%	21%	12%	4%	0%	0%

Intensities in 270° c-plane

0°	5°	10°	15°	20°	25°	30°	35°	40°	45°	50°	55°	60°	65°	70°	75°	80°	85°	90°	95°
482	479	474	465	452	436	416	392	364	333	298	261	223	183	140	97	55	20	2	0
100%	100%	98%	97%	94%	91%	86%	81%	76%	69%	62%	54%	46%	38%	29%	20%	11%	4%	0%	0%

Beam angle 50%	Field angle 10%	Cutoff angle 2,5%	Intensity ratio in 120° cone	Intensity ratio in 90° cone
117,4°	161,6°	172,7°	78,4%	52,7%